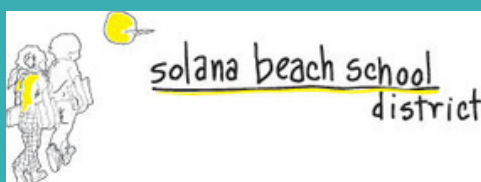



# Guide to Reopening Schools 2020-21

SOLANA BEACH  
SCHOOL DISTRICT

JANUARY 28, 2021, EDITION



This document is updated per SBSB Board of Education approvals and state and local health orders and guidelines. Future changes and updates will be noted with 





Solana Beach School District

## Welcome Back

Dear Staff and Families,

On behalf of the Solana Beach School District, I welcome you and your children back to school as part of our Online Scholars and Onsite Scholars programs. The 2020-21 school year opened as one of the most unusual we have ever experienced in our lifetimes, but I remain inspired by the positivity, determination, and professionalism of our staff as we welcome back students into physical and virtual classrooms, while adhering to state and local health order requirements and upholding the high-quality academic standards we all expect.

We ask you to carefully review this guide before your child returns to our physical campuses the week of September 21. It will help you prepare for the comprehensive protocols and practices we have established in order to help create safe, engaging learning environments that we can maintain and keep open by preventing the spread of COVID-19.

This year, we look forward to an even greater collaborative parent-school partnership. As you have heard me say, we encourage everyone to embrace the word, "flexibility." More than ever, we must be flexible in our daily lives. Your children will be watching us, the adults, for cues. We want to model adaptability, collaboration, and resiliency.

Please stay connected and look for updates throughout the year via ParentSquare. We enthusiastically welcome you back to school!

## Board of Education

Vicki King, Esquire  
*President*

Debra H. Schade, Ph.D.  
*Vice President*

Gaylin Allbaugh  
*Clerk*


Dana King  
*Member*

Julie Union  
*Member*



S o l a n a B e a c h S c h o o l D i s t r i c t

## Table of Contents

What to Expect on Reopening.....	4
SBSD Guiding Principles.....	4
Instructional Learning Models.....	5-7
• Online Scholars.....	6
• Onsite Scholars.....	7
Additional Considerations.....	8
Onsite Scholars/Staff COVID-19 Testing and Mitigation Measures..9	
Student Health Protocols.....	10
Special Education.....	10
Phasing In Return to Schools.....	11
School/Classroom Closure FAQs.....	11
Symptom Decision Tree.....	12
Child Care and Technology.....	13
Social Emotional Learning (SEL) and Discovery Labs.....	14
Staff Health and Safety Protocols.....	15
Help Prevent the Spread.....	16
Resources and Links.....	17
Acknowledgements.....	18
School Site Addenda.....	19

# What You Can Expect When Returning to Our Physical Campuses in September

The Solana Beach School District is pleased to offer two robust instructional learning models for the 2020-21 school year, the *Online Scholars* and *Onsite Scholars* models. All parents/guardians were asked to commit by July 30, 2020, to one learning model for the entire school year to allow us to plan and prepare accordingly for staffing and resources. Students whose parents/guardians did not choose a learning model by the deadline were assigned to the *Onsite Scholars* model. Requests to change models are only considered on a case-by-case basis, based upon space availability.

**Given state guidelines in August 2020 all schools initially opened in an online model only; however, current county and state guidelines permit school districts to open physical campuses. Our Board has approved an opening date of September 21, 2020, for Cohort A, and September 24, 2020, for Cohort B. We will continue to update this document and update families via ParentSquare emails throughout this process.**

Our staff has prepared to offer Online and Onsite Scholars a rigorous academic program, keeping the health and safety of students and staff at the forefront during this challenging time.

## 5

### Daily Instructional Schedule Guiding Principles

1. Addressing essential learning standards for the school year
2. Feedback to move learning forward and monitor progress
3. Equitable access for all students
4. Student-student meaningful interaction
5. Teacher-student meaningful interaction

p4

## 3

### Guiding Principles for Reopening

*All Solana Beach School District guidelines are to be accomplished while maintaining the health and safety of students and staff as a top priority.*

1. Return as many students to school as many days as possible
2. Maximize teaching and learning
3. Provide for the social emotional needs of students, staff, and families

# Get the Facts: Two Options, Two Learning Models

# ONLINE SCHOLARS AND ONSITE SCHOLARS

Two Learning Models, Two Options  
**SOLANA BEACH SCHOOL DISTRICT**



## Online Scholars

- 180 days of instruction
- California State Standards
- SBSB-adopted curriculum
- Structured Instructional day schedule (e.g. 8:30 a.m. to 2:30 p.m.)
- Combination of daily live instruction and Pre-recorded instruction
- Independent work
- SBSB fully-credentialed, dedicated teacher trained in online instruction
- SBSB and state assessment
- Discovery Labs
- Daily attendance
- Progress Reporting/Parent Conferences
- Dedicated administrator
- Students from throughout SBSB
- Cluster students from like schools/grade levels, whenever possible
- Online Scholars able to return to their school of attendance in 2021-22
- Learning Platforms: Seesaw, Google Classroom, and Zoom

Learn new routines and procedures first few weeks

Examples:  
Digital learning platforms  
Student/Student and Staff/Student interactions online

## School/Home Partnership

- Ongoing communication
- Monitoring and supporting the student, as appropriate by grade level, with the daily schedule, assignments, grades, and homework
- Creating a consistent space conducive for learning at home and accessing District-provided materials during instructional time
- Fall and spring parent/teacher virtual conferences to discuss student progress
- Additional meetings as needed, by appointment



## Onsite Scholars

- 180 days of instruction
- California State Standards
- SBSB-adopted curriculum
- Structured Instructional day schedule (e.g. 8:30 a.m. to 2:30 p.m.)
- Combination of daily live instruction and pre-recorded instruction
- Whole group, small group, and independent learning time
- SBSB and state assessment
- Discovery Labs
- Student/Student and Staff/Student interaction (physical distancing)
- Staggered hand-washing/hygiene breaks (recess/lunch)
- Outside learning opportunities
- Staggered arrival/dismissal
- New classroom configurations for safety
- Individual supplies to reduce sharing
- Progress Reporting/Parent Conferences
- Learning Platforms: Seesaw, Google Classroom, and Zoom

Learn new routines and procedures first few weeks

Health and safety protocols:  
Hand-washing/hygiene, physical distancing, and face coverings  
Digital learning platforms

## School/Home Partnership

- Ongoing communication
- Monitoring and supporting the student, as appropriate by grade level, with the daily schedule, assignments, grades, and homework
- Creating a consistent space conducive for continuing learning at home
- Fall and spring parent/teacher conferences to discuss student progress
- Additional meetings as needed, by appointment

# Online Scholars 2020-21

District FAQs can be found at [www.sbsd.net/reopening](http://www.sbsd.net/reopening)

*Online Scholars* is a rigorous academic program created specifically for the 2020-21 school year. It meets all of the same grade-level content expectations as our onsite model, and offers fully credentialed District teachers who are trained in and dedicated solely to the online program and its students.

For more details about *Online Scholars*, please read "What You Need to Know."

## What You Need to Know

### Meets the District's 5 Daily Instructional Schedule Guiding Principles

1. Covers an entire school year of grade level standards
  2. Provides assessment and feedback to move learning forward and monitor progress
  3. Provides equitable access for all students
  4. Provides student-student meaningful interaction
  5. Provides teacher-student meaningful interaction
- Promotes teachers and families as educational partners
  - Incorporates an active parent/guardian role of supporting child access to District-provided materials disseminated safely through school-specific pickup/dropoff days and times
  - Creates an online space conducive for learning
  - Includes structured ongoing communication; scheduled virtual appointments, as needed; and in-person meetings may be scheduled, if necessary
  - A full-year commitment
  - Requires daily attendance and student engagement in a consistent daily/weekly structured learning program (e.g., Monday through Friday, structured academic timeframe of learning)
  - Provides students with additional supports and/or enrichment, as needed, to reinforce and/or accelerate learning concepts; students may be asked to meet with enrichment, intervention, or service providers
  - Integrates Discovery Lab program
  - Promotes intentional collaboration between teachers and other service providers
  - Uses multiple learning platforms (e.g. Seesaw, Google Classroom, and Zoom)
  - Requires explicit commitment to adhering to Digital Citizenship, supported through curriculum lessons the first two weeks of school and reinforcement throughout the year
  - Consists of daily live (synchronous) learning, pre-recorded (asynchronous) learning, as well as independent learning, all within a structured daily schedule
  - Includes completion of required assessments, progress reports, and parent/teacher conferences for all students; engagement in formalized assessment coordinated by the teacher, virtually, but at times may necessitate on-site administration adhering to physical distancing guidelines
  - Offers August Mini-Open House for families

# Onsite Scholars 2020-21

District FAQs can be found at [www.sbsd.net/reopening](http://www.sbsd.net/reopening)

## What You Need to Know

### Meets the District's 5 Daily Instructional Schedule Guiding Principles

1. Covers an entire school year of grade level standards
2. Provides assessment and feedback to move learning forward and monitor progress
3. Provides equitable access for all students
4. Provides student-student meaningful interaction
5. Provides teacher-student meaningful interaction

### In addition to details noted on the infographic (see page 5), the *Onsite Scholars* model requires physically reopening our campuses, according to the following:

- The District will phase in reopening its physical campuses (see page 10)
- Developed with the intent of getting ALL students back five days a week; but remaining flexible based on current and changing health orders.
- SBSD Board-approved plan for the future physical reopening of schools requires that staff and K-6 students will:
  - a. Take active temperature checks onsite
  - b. Wear facial coverings
  - c. Maintain 6' physical distancing
  - d. Specific to reopening, the District will follow county guidelines regarding COVID-19 testing prior to any students and staff returning to school facilities.
- Schools will stagger arrival/departure and recess/lunch schedules to maintain stable student cohorts to maximize health and safety
- Regarding visitors, due to the current public health emergency, all visitors are not be permitted to be on campus at this time.
- If a county returns to the state monitoring list, schools may remain open
- It is important to note, that a class, school, or district is subject to closure based on state-identified metrics. [View the California Department of Public Health COVID-19 and Reopening In-Person Learning Framework for K-12 Schools in California, 2020-2021 School Year](#).

*Onsite Scholars* is a robust academic program that meets California State Standards and SBSD-adopted curriculum, maximizing the safety and health of all students and staff. It offers fully credentialed District teachers.

We encourage families with *Onsite Scholars* to be flexible and ready to pivot between onsite and online models, as required by state and local health standards, or as determined by the District in the case of COVID-19 found onsite.

For more details about *Onsite Scholars*, please read "What You Need to Know."

# Physical Distancing: 6 Feet

Staff will be trained and students will be educated on the benefits of physical distancing. In addition, all spaces where students and staff work and learn will have furniture spaced, floor signage, and posters to reinforce physical distancing. Students will remain within their cohort during their break/snack time, and maintain physical distancing while playing and eating snack and/or lunch. Schools will offer students individual supplies (pencils, crayons, markers, scissors, rulers, etc.) to reduce, if not eliminate, sharing. [View graphic for appropriate physical distancing.](#)

## Staggered Schedules

Schools will minimize student contact at the beginning and end of the school day with staggered start and end times and by designating routes for entry and exit. Recess activities will be kept in separated areas designated by classes. Staggered lunch schedules will be maintained and meals served in classrooms or designated outdoor areas. Students will have opportunities for outside learning.

## Face Coverings

Schools will require that all students\* (K-6) and staff wear face coverings while on campus. Students without face coverings will be provided Personal Protective Equipment (PPE), including masks, per health agency guidance. [View graphic for face mask coverage from the CDC.](#)

- Exemptions may include persons with a medical condition, mental health condition, or disability that prevents wearing a face covering

## Handwashing, Sanitizing, and Classroom Ventilation

Teachers will instruct students on handwashing etiquette, as well as other healthy routines (e.g. covering coughs). Students will participate in handwashing breaks. High-touched surfaces will be disinfected frequently throughout the day and after school by trained staff. Hand sanitizing stations will be provided per health agency guidance as PPE. All classrooms have Merv 13 filters, the highest rated filter available for our HVAC units. Each classroom has an individual unit. Outside air and the number of air exchanges per hour in classrooms have also been increased. [View handwashing instructions graphic.](#)

## Nutrition Services

Students will have lunch and sit with their class/cohort group on a staggered schedule to support 6' physical distancing. Child Nutrition Services will continue to provide meal service; however, lunches will be individually packaged and served in a disposable bag. Students will also be allowed to bring food from home in either a disposable or reusable lunch bag or water bottle. If bringing a reusable lunch bag or water bottle, items should be thoroughly cleaned when the student returns home each day. For qualifying *Online Scholars*, "grab and go" meals will be available.

## Additional Considerations: Onsite Scholars Model Builds In Health & Safety

*The Onsite Scholars model requires additional considerations in order to protect and maximize the health and safety of our students and staff. We will continue to monitor and refine these areas per changing state and local health orders and guidance.*

*We request the cooperation of all staff, students, and families in adhering to safety protocols as we phase in the physical reopening of our campuses during the 2020-21 school year.*

[\*\*View Parent/Guardian Health and Safety Agreement.\*\*](#)



# Staff and Onsite Scholars Proactive COVID-19 Testing

Get testing details at [www.sbsd.net](http://www.sbsd.net)

On September 10, 2020, our Board of Education approved a districtwide, proactive COVID-19 Testing Program for Onsite Scholars (students) and all employees upon re-entry to campuses (fall/winter) and periodic asymptomatic testing (fall/winter/spring). SBSB is partnering with UC San Diego Health.

Testing will be administered by UC San Diego Health technicians. The PCR Anterior Nares (gentle nasal swab) test will be used.

The UC San Diego Health lab will notify parents/guardians and employees of test results within 24-72 hours. Parents/guardians and employees, per SBSB reopening protocols, are required to notify school officials immediately if test results are positive.

While we may not mandate testing for students, we are strongly recommending student participation to assist us in our efforts to keep our schools open and all students and staff healthy.

# 'Above and Beyond' Proactive Testing & Safety Measures

With Board approval on September 10, 2020, SBSB is partnering with UC San Diego Health, a top-ranked hospital system, to provide proactive COVID-19 testing for all students and staff who returned to our physical campuses in September as part of our Onsite Scholars program.

The "above and beyond" testing program is intended to promote the health and safety of staff members, students and families, while doing everything possible to keep SBSB schools and classrooms open and our Onsite Scholars and teachers on our physical campuses.

## 15 Safety Mitigation Measures

1. Facial coverings required for all staff and all students
2. Stable Cohorts (students do not intermingle with students in other classes)
3. 6' Physical distancing required between staff and students and student to student
4. Healthy hygiene breaks
5. Staggered Arrival and Dismissal
6. Daily active staff and student symptom and temperature checks
7. Staggered Recess and Lunch
8. Proactive asymptomatic COVID-19 testing
9. Internal (school nurses) and external (county health department contact tracing)
10. Increased cleaning and disinfecting
11. Increased outdoor air into classrooms
12. MERV 13 HVAC filters
13. Outdoor learning activities
14. Continue with 14-day quarantine period
15. All employees offered N95 masks

## Discrimination

### Expectations

SBSB will not discriminate against any student(s), their families, or staff, who were or are diagnosed with COVID-19 or who are perceived to be a COVID-19 risk.

## Vaccination

### Expectations

It is recommended that students be immunized for influenza in the fall, unless contraindicated by personal medical conditions.

- To protect the school community
- Reduce demands on healthcare facilities
- Decrease illnesses that cannot be readily distinguished from COVID-19 and would, therefore, trigger extensive measures from the school and Public Health authorities

# Student Health Protocols

## Expectations

The SBSB Board-approved plan for the physical reopening of schools requires that Kindergarten through grade 6 students, along with all staff, will:

- Take active temperature checks onsite
- Wear facial coverings\* (provided as PPE by school)
- Maintain 6' physical distancing

Following the Board's September 10, 2020, regular meeting, the District will offer proactive universal COVID-19 testing to staff and Onsite Scholars (students). See testing details on page 10.

*\*Students may wear personal face coverings as long as they meet health standards. Families are encouraged to wash students' face coverings daily to reduce the risk of spreading germs. If students elect not to wear face coverings or physically distance, families will need to commit to the Online Scholars model.*

## Student Attendance

### Expectations

As part of both learning models, *Online Scholars* and *Onsite Scholars*, students are expected to attend daily instructional activities (e.g. between 8:30 a.m. and 2:30 p.m.). Specific hours will vary by site.

## IEP-Related Services and 504 Accommodations

### Expectations

All IEP and 504 **meetings** will be held virtually, until further notice. Please contact your child's case manager for specific questions regarding your child's individualized IEP or 504 plan.

Please refer to the 504 or IEP process in determining exemptions for **facial coverings**.

## Symptom Screenings: School and Home

SBSB recognizes that some children are asymptomatic or present with mild symptoms. We are following the California Department of Public Health (CDPH) and San Diego Health and Human Services Agency guidelines for maintaining the health and safety of staff and students when we return to campuses. In addition to physical distancing, wearing face coverings, and taking routine handwashing breaks, staff and students will participate in active health screenings at school on a daily basis with a no-touch thermometer.

Symptoms to look for at home before your child comes to school:

- Fever of 100° F or higher
- Cough
- Shortness of breath
- Nasal congestion/runny nose
- Sore throat
- Nausea, vomiting, or diarrhea
- New loss of taste and/or smell
- Headache
- Recent muscle or body ache

If your child has COVID-19, contact school officials immediately and isolate at home. A student may return when all three conditions are met:

- 24 hours have passed without a fever (and no medication)
- Symptoms improve
- **At least 10 days** pass after symptom onset or test date

[View the California Department of Public Health COVID-19 and Reopening In-Person Learning Framework for K-12 Schools in California, 2020-2021 School Year.](#)

# FAQs:

## Partial or Full School Closures (from California Department of Public Health)

If a school is closed for in-person learning, when may it reopen?

Schools may typically reopen after 14 days and the following have occurred:

- Cleaning and disinfecting
- Public health investigation
- Consultation with local public health department

What are the criteria for closing a school district?

A superintendent should close a school district if 25% or more of schools in a district have closed due to COVID-19 within 14 days, and in consultation with the local public health department.

If a school district is closed, when may it reopen?

Districts may typically reopen after 14 days, in consultation with the local public health department.

See the Fever/COVID-19 symptom decision tree on the following page.

## Phasing In the Physical Return to Our Campuses

The District will use the health and safety of students and staff to drive all decision-making for additional phases.

Additional phases **may** include:

- Slowly returning more students to physical campuses, more days per week
- Returning students to campuses will be revisited as conditions improve
- Conditions for returning all students to physical campuses will be based on scientific data
- Returning all students to campuses, five days a week

## What Is The Criteria for Closing A School?

Based on information from the California Department of Public Health, individual school closure is recommended based on the number of cases, the percentage of the teacher/students/staff that are positive for COVID-19, and following consultation with the Local Health Officer.

Individual school closure may be appropriate when there are multiple cases in multiple cohorts at a school or when at least five percent of the total number of teachers/student/staff are cases within a 14-day period, depending on the size and physical layout of the school.

The Local Health Officer may also determine school closure is warranted for other reasons, including results from public health investigation or other local epidemiological data.

[View the California Department of Public Health COVID-19 and Reopening In-Person Learning Framework for K-12 Schools in California, 2020-2021 School Year](#)

# Fever / COVID-19 Symptom Decision Tree

(Version: 07/31/2020c)



**At school, student or staff member develops any one of the following signs or symptoms:**

- Fever with or without chills/rigors (fever defined as  $T > 100.0$  that does not resolve within 30 min. without medication);
- Cough\*  Shortness of breath  Nasal congestion/rhinorrhea (runny nose)\*  Sore throat
- Nausea, vomiting, or diarrhea\*  Fatigue\*  New loss of taste/smell  Headache\*
- Muscle or body aches\*  Poor feeding or poor appetite\*

\* Disregard this symptom if school personnel already aware of a chronic, pre-existing condition that causes the symptom. The nature of the presenting symptom (e.g., duration, intensity) must be consistent with the underlying chronic condition.

**ACTION:** Apply appropriate PPE; isolate student/staff member until sent home; recommend they reach health care provider for instructions. Note: Other infections can cause same symptoms (e.g., flu, strep, etc.) but these do not rule out COVID-19 as co-occurring



## STUDENT / STAFF TO STAY HOME UNTIL...

**With PCR COVID-19 viral test**  
(Not antibody test; not antigen test)

**Without PCR Covid-19 viral test**

**Note from healthcare provider re: chronic illness**

**Negative**

**Positive**

**Proof of negative test required.**

Identify all close contacts (as defined by CDC). Identify all cohorts (class, bus, clubs, etc.). Quarantine and exclude close contacts (and work with public health on decision to exclude entire cohort) for 14 days after last date case present.

If note from MD/DO/NP/PA, or public health defines case as presumed COVID-19 virus (based on symptoms and circumstances), then: (a) consider notifying staff and parents of class (or bus, etc.) of a potential exposure; and (b) in conjunction with public health, exclude "close contacts" (using CDC definition) for 14 days from last day of exposure.

A signed note from a licensed MD/DO/NP/PA (who manages that condition) must: confirm the chronic diagnosis (i.e., cites labs, date-of-record when diagnosed); include provider's contact information; explain how symptoms are unrelated to COVID-19; and be accompanied by signed consent for school to interact with MD/DO/NP/PA.

**May return 72 hours after symptoms resolved.**

Notification to school community of a known case.

Retested or Not Retested  
\*Proof of negative test not required

**Isolate the case. May return when:**  
(a) 24 hours without fever (no meds) and (b) symptoms are improving AND (c) at least 10 days from symptom onset or test date.

**May return to school immediately**  
Consider individualized student health plan to prevent any future unnecessary dismissals.



**If school becomes aware of one case in one cohort (shared bus, classroom, lab, team, etc.) then have school district's liaison to Public Health Department report the case for further direction on quarantine.**



# Child Development Center (CDC)



## Toddler Center and Preschool

Register now at [solanabeachcdc.com](https://solanabeachcdc.com)

Our licensed preschool program follows the most current Community Care Licensing and Department of Public Health guidelines. Essential workers will be prioritized for childcare needs, with additional space available to non-essential workers until filled.

We offer Preschool programs at two locations:

### **CDC Solana Beach Preschool (309 N. Rios, Solana Beach, CA 92075)**

Ages: 18 months-5 years old

Hours: Monday-Friday, 7 a.m. to 4:00 p.m.

### **CDC Solana Ranch Preschool (13605 Pacific Highlands Ranch, San Diego, CA 92130)**

Ages: 3-5 years old

Hours: Monday-Friday, 7 a.m. to 4:00 p.m.

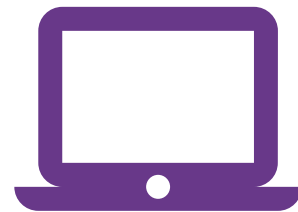
## School-Age Childcare

Register now at [solanabeachcdc.com](https://solanabeachcdc.com)

Our school-age childcare program is license-exempt as a Solana Beach School District program. We offer school-age childcare options according to District guidelines, which adhere to state and local health orders. Essential workers will be prioritized for childcare needs, with additional space available to non-essential workers until filled. We offer school-age childcare at all District school locations.

For the most up-to-date information regarding all Child Development Center programs visit our website at [solanabeachcdc.com](https://solanabeachcdc.com).

# Technology: Equity Among Students

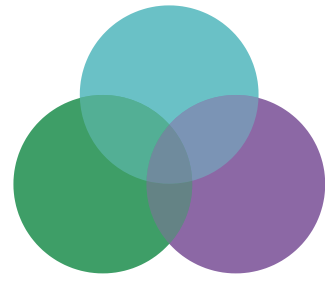


For the 2020-21 school year, all students enrolled in the Solana Beach School District are issued a 1:1 mobile device (e.g. iPad/Chromebook). Students with families that require internet connectivity support are provided a mobile hotspot.

Equipment distribution for enrolled students was completed prior to the start of the school year and distribution will be ongoing for newly enrolled students.

All students have access to selected district-standard software, including Seesaw, Google Classroom, Zoom, and iReady.

# Social-Emotional Resources During Challenging Times



The health, safety, and wellness of our staff, students, and families is a top priority for schools. While many of us work and attend school from home, it is especially important to maintain daily routines, which includes time for exercise and wellness.

Below are some resources to support our students and families. If you have questions, need more information, or have a child who is struggling with social-emotional well-being, please reach out to us by filling out the SBSD Social-Emotional Check-In questionnaire (links below).

[SBSD Social-Emotional Check-In-English](#)

[SBSD Social-Emotional Check-In-Mandarin](#)

[SBSD Social-Emotional Check-In-Spanish](#)

[Family Resources and Activities for Social-Emotional Learning](#)

[Solana Beach School District Community Resources](#)

## Discovery Labs

STREAM \* Technology  
Art \* Supplemental PE



Whether Online or Onsite Scholars, Students Will Continue Engaging in Discovery Labs

Discovery Labs will be a part of both the Online and Onsite Scholars learning models during the coming school year.

Students in both models will engage in Discovery Labs that include Science, Technology, Research, Engineering, Arts, and Mathematics (STREAM); Technology Lab; Art; and Supplemental Physical Education, which are also supported by the Solana Beach Schools Foundation and the District.

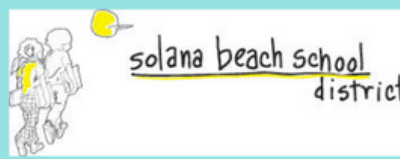
In addition, students will continue to receive music and media as part of their enrichment.

Thank you, Solana Beach Schools Foundation, for your unwavering commitment and support.

# Staff Health and Safety Protocols Help All of Us

The District has created health and safety protocols for all staff members in the Solana Beach School District to maximize the health and safety of everyone on our campuses and worksites as our schools begin to physically reopen. It is important that we adhere to these protocols to prevent the spread of COVID-19 and keep our schools open for students and staff.

All SBSB staff will participate in proactive COVID-19 testing throughout the 2020-21 school year.



## DAILY EMPLOYEE COVID-19 SYMPTOM SCREENER PROCESS

All employees, whether working from home or who are physically working at one of our schools or office sites, are required to take and submit the online Daily Employee COVID-19 Symptom Screener.

All employees are asked to stay at home when sick.

We appreciate your cooperation in helping us prevent spread.



### 1 GO ONLINE

Go to Laserfiche from your smartphone, laptop, desktop computer, or iPad, each morning when you physically report to your worksite.

<https://laserfiche.sbsd.k12.ca.us/Forms/checkin>



### 2 LOG IN

Log in using your Solana Beach School District username (firstlast@sbsd.net) and password (the same one you use for your email account).

### 3 COMPLETE THE SCREENER

Complete the Daily COVID-19 Symptom Screener, including taking your own temperature using the provided no-touch thermometers.



### 4 SIGN AND SUBMIT YOUR FORM

Electronically sign and submit your completed form. Your supervisor is automatically notified of its completion.



**EASY  
SCREENER  
ACCESS!  
SCAN THIS  
QR CODE**

# HELP PREVENT THE SPREAD OF NOVEL CORONAVIRUS (COVID-19)



COVID-19 is a respiratory illness caused by a new coronavirus.

## Symptoms include:

- Fever or chills
- Cough
- Difficulty breathing
- Fatigue
- Body aches
- Runny Nose
- Congestion
- Headache
- Sore throat
- New loss of taste or smell

Visit [CDC.gov/coronavirus](https://www.cdc.gov/coronavirus) for a complete list of symptoms.

To help prevent the spread of the virus and protect yourself, follow these recommendations:

For questions talk to your health care provider or call 2-1-1



Wash your hands or use hand sanitizer often.



Avoid sharing personal household items.



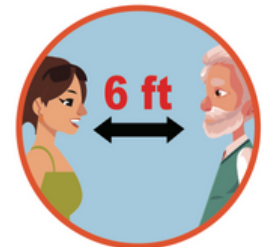
Avoid touching eyes, mouth and nose with unwashed hands.



Cover your cough or sneeze with a tissue, then throw it in the trash and wash your hands.



Stay home and keep your distance from others in the home if you are sick.



Maintain at least 6 feet between you and others.



Use a face covering if you leave your home.



Clean and disinfect household surfaces often.

Updated 6-2-2020





# Resources and Links for Families

[Who to Contact if COVID Positive or Presumptive](#) 

[San Diego County: Health & Human Services Health Orders](#)

[California Department of Public Health - COVID-19](#)

[California Department of Public Health Guidance for Reopening Schools](#)

[Centers for Disease Control and Prevention \(CDC\) - COVID-19](#)

[San Diego County Public Health FAQs](#)

[Stronger Together: A Guidebook for the Safe Reopening of California's Public Schools \(CDE\)](#)

[San Diego County Office of Education Reopening Plan](#)

[Rady Children's COVID-19 Town Hall for Families](#)

[Handwashing: A Family Activity](#)

[Handwashing Video](#)

[Just for Kids: A Comic Exploring the New Coronavirus \(National Public Radio\)](#)

[Talking to Children About COVID-19](#)

[What parents should know: How to protect yourself and your children. \(UNICEF\)](#)

[What to Do If You Are Sick With Coronavirus Disease 2019 \(COVID-19\)](#)

[World Health Organization \(WHO\)](#)



# Acknowledgements

The District wishes to acknowledge the following stakeholder groups for their ongoing commitment, professionalism, and care on behalf of all staff, students, and families in the Solana Beach School District. Without your hard work over the past several months and into the 2020-21 school year, we could not have created this new educational framework.

*The statistics noted are as of August 2020.*

## Board of Education

Decision-making, information-gathering, and adapting with ever-changing health orders and guidelines from state and local government and health agencies on behalf of students and staff

## Principals

Planning and hosting seven site-specific meetings with approximately 1,900 attendees (20 hours of meeting time, in addition to planning)

## Reopening Workgroups

Teachers, classified support staff, and administrators completing 5,335 hours of meeting time to guide reopening schools and implementing two instructional learning models

## Families

Over 300+ questions received, hundreds of detailed and thoughtful emails, numerous phone calls to principals, and outreach to District Leadership

## Employee Leadership (SBTA/SBASP)

Continuing productive collaboration and dialogue through difficult, uncharted waters in the education profession

## PTA/PTO and Solana Beach Schools Foundation

Leadership supporting schools and the District through an unprecedented and historical period in our lifetime



# Solana Ranch

## SCHOOL ADDENDUM

# SOLANA RANCH

2020-2021

## BELL SCHEDULE

*Inspiring Greatness in Tomorrow's Leaders!*

### Student Arrival

8:20 AM 4<sup>th</sup>, 6<sup>th</sup> Grade and 5/6 Combo.- Screening will occur at the front two gates

8:30 AM 5<sup>th</sup> and 3<sup>rd</sup> Grade - Screening will occur at the front two gates

8:40 AM 1<sup>st</sup>, 2<sup>nd</sup> and Kindergarten - Screening will occur at front two gates & Kinder Ramp

\* Hygiene Breaks will be given before recess, after recess, before lunch, after lunch and before dismissal

### RECESS

9:40-9:55 "A" Recess Grades 4, 6 (and 5/6 combo) - Assigned play areas

10:15 AM - 10:45 AM "B" Kinder Recess (1 class eats snack and the other plays)

10:00 AM - 10:15 AM "C" Recess Grades 5<sup>th</sup> and 3<sup>rd</sup> - Assigned play areas

10:20-10:35 AM "D" Recess Grades 1<sup>st</sup> and 2<sup>nd</sup> - Assigned play areas

Bells will ring at 9:40, 9:55, 10:00, 10:15, 10:20, 10:35

### LUNCH

11:40-12:25 PM: Lunch "A" – 4<sup>th</sup>, 5<sup>th</sup>, 6<sup>th</sup> Grade Lunch

- 11:40 - 12:05: 4th and 5th Grade Eats @ lunch area – 1 student per table - Aides take classes out in 2 lines to play
- 12:05 - 12:25: Play (Teachers pick students up from their assigned play spot)
- 11:40 - 12:05: Grades 6<sup>th</sup> and Combo Plays (Teachers walk students to assigned spots)
- 12:05 - 12:25: Eats - 1 student per table (Teachers pick students up from lunch tables)

12:00 - 12:45 PM: Kinder Lunch

- 12:00 - 12:20 - 1 class eats at assigned tables other class plays 1 student per table
- 12:20 - 12:45 - 1 class eats other class plays

12:35-1:20 PM: Lunch "B" – Grades 1<sup>st</sup>, 2<sup>nd</sup>, 3<sup>rd</sup>

- 12:35 - 1:00: 3<sup>rd</sup> eats at tables 1 student per table
- 1:00 - 1:20: Plays in assigned play space (Teachers pick students up from assigned play spot)
- 12:35 - 1:00: 1<sup>st</sup> and 2<sup>nd</sup> grade plays (teachers walk them out to their assigned play space)
- 1:00 - 1:20: Eat 1 student per table (Teachers pick students up from lunch tables)

- Lunch Bells will ring at: 11:40, 12:25, 12:35, 1:20

### DISMISSAL

2:20PM - 4<sup>th</sup>, 5/6 combo., 6<sup>th</sup> Grade - Teachers walk students out of the building to the area where they arrived (4-6th graders can exit Sunflower Crest to Walk home)

2:30PM - 5<sup>th</sup> and 3<sup>rd</sup> Grade – Teachers walk students out of the building to the area where they arrived (5th graders can exit Sunflower Crest to Walk home)

2:40 PM- 1<sup>st</sup>, 2<sup>nd</sup> and Kindergarten Grade – Teachers walk students out of the building to the area where they arrived



# Carmel Creek

SCHOOL ADDENDUM

# Carmel Creek 2020-2021 Staggered Grade Level Schedule

**Arrival** - Sanitize before entering the school building.

8:10am	2 <sup>nd</sup> Grade & Room 26
8:20am	Kinder
8:30am	1 <sup>st</sup> & 3 <sup>rd</sup> Grade

Sanitize before entering the classroom.

---

**Recess Bells** - Sanitize before and after recess

Recess 1

10:00am – 10:15am	Kinder, Rm. 26 & 2 <sup>nd</sup> Grade Go Out
-------------------	---

Recess 2

10:35am – 10:50am	1 <sup>st</sup> & 3 <sup>rd</sup> Grade Go Out
-------------------	--

Sanitize before entering the classroom.

---

**Lunch Bells** - Sanitize before and after eating. Sanitize before and after playing

Lunch 1

11:30am – 12:15pm	Kinder, Rm. 26 & 2 <sup>nd</sup> Grade Go Out
-------------------	---

Lunch 2

12:35pm – 1:20pm	1 <sup>st</sup> & 3 <sup>rd</sup> Grade Go Out
------------------	--

Sanitize before entering the classroom.

---

**Dismissal** - Sanitize before leaving the school building

2:10pm	2 <sup>nd</sup> Grade & Room 26
2:20pm	Kinder
2:30pm	1 <sup>st</sup> & 3 <sup>rd</sup> Grade

---



# Skyline and Solana Vista

SCHOOL ADDENDUM

SKYLINE/ SOLANA VISTA  
2020-2021  
BELL SCHEDULE

Hygiene Break upon arrival and before dismissal

Arrival		Dismissal
8:00-8:15am	Global Leidy/Tillyard and Global 5/6	2:00pm
8:15-8:30am	Global 1/2 and 3/4	2:15pm
8:30-8:45am	Fourth Grade	2:30pm
8:45-9:00am	Third Grade and Fifth Grade	2:45pm
9:00-9:15am	Third Grade and Sixth Grade	3:00pm

Hygiene Break BEFORE recess

Recess	
9:30-9:45am	Global K-6
10:00-10:15am	Global Tillyard
9:50-10:05am	Third and Fourth
10:10-10:25am	Third and Fifth
10:30-10:45am	Sixth

Hygiene Break AFTER recess

Hygiene Break BEFORE lunch

Lunch	EAT/PLAY Hygiene Break AFTER eating
11:15-12:00pm	Global Leidy
11:30-12:15pm	Third, Fourth, Global 1-6
12:00-12:45pm	Global Tillyard
12:30-1:15pm	Third, Fifth, Sixth

Hygiene Break AFTER lunch



Solana Highlands  
Elementary



*a National Blue Ribbon School and a California Distinguished School*



Solana  
Highlands  
and  
Solana Vista  
SCHOOL ADDENDUM

SOLANA HIGHLANDS/ SOLANA VISTA  
2020-2021  
BELL SCHEDULE

**Hygiene Break upon arrival**

Arrival		Dismissal
7:55-8:10	SV Kinder-2nd/Bus Management	2:00
8:20-8:30	Kindergarten & 1st grade	2:20
8:30-8:40	2nd grade & 3rd grade	2:30

**Hygiene Break BEFORE recess**

Recess	
9:50-10:05	SV & SH Kinder
10:10-10:25	SV & SH 1st
10:30-10:45	SV & SH 2nd
10:50-11:05	SH 3rd

**Hygiene Break AFTER recess**

**Hygiene Break BEFORE lunch**

Lunch	EAT/PLAY <b>Hygiene Break AFTER eating</b>
11:00-11:45	SV & SH Kinder
11:30-12:15	SV & SH 1st
12:00-12:45	SV & SH 2nd
12:30-1:15	SH 3rd

**Hygiene Break AFTER lunch**

	Minimum Day Schedule	Dismissal
7:55-8:10	SV Kinder-2nd/Bus Management	11:50am
8:20-8:30	Kindergarten & 1st grade	12:10pm
8:30-8:40	2nd grade	12:20pm
8:40-8:50	3rd grade	12:30pm



*Solana Pacific*

Solana Pacific

SCHOOL ADDENDUM

# SOLANA PACIFIC

## 2020-2021

### BELL SCHEDULE

8:30 - 8:40 a.m.    4<sup>th</sup> grade Screening/Arrival  
 8:40 - 8:50 a.m.    5<sup>th</sup> grade Screening/Arrival  
 8:50 – 9:00 a.m.    6<sup>th</sup> grade Screening/Arrival

#### RECESS (Tables & 5 Play Areas)

9:40 a.m. – 9:55 a.m.                      4<sup>th</sup> Grade (sanitize 10:00 – 10:15)  
 10:15 a.m. - 10:30 a.m.                    5<sup>th</sup> Grade (sanitize 10:30 – 10:45)  
 10:45 a.m. – 11:00 a.m.                    6<sup>th</sup> Grade (sanitize 11:00 – 11:15)

#### LUNCH (Tables & 5 Play Areas)

11:15 a.m. - 12:00 p.m.                    4<sup>th</sup> Grade eat/play (sanitize while playing)  
 12:00 p.m. - 12:45 p.m.                    5<sup>th</sup> Grade eat/play (sanitize while playing)  
 12:45 p.m. - 1:30 p.m.                    6<sup>th</sup> Grade eat/play (sanitize while playing)

#### DISMISSAL

2:40 p.m.                      4<sup>th</sup> grade Dismissal  
 2:50 p.m.                      5<sup>th</sup> grade Dismissal  
 3:00 p.m.                      6<sup>th</sup> grade Dismissal

#### Hygiene Breaks will occur:

Upon Arrival  
 Before Recess  
 After Recess  
 Before Lunch  
 After Eating  
 After Lunch  
 Before Dismissal

### “MINIMUM DAY”

Screening/Arrival  
 Dismissal

8:30 – 8:40 a.m. 4<sup>th</sup>, 8:40 – 8:50 a.m. 5<sup>th</sup>, 8:50 – 9:00 a.m. 6<sup>th</sup>  
 12:10 p.m. 4<sup>th</sup>, 12:20 p.m. 5<sup>th</sup>, 12:30 p.m. 6<sup>th</sup>



Solana  
Santa Fe

SCHOOL ADDENDUM

# Solana Santa Fe

## Bell Schedule with Hygiene Breaks

### Bell/Hygiene Break Schedule:

#### Group 1

8:30	Sanitizer Upon Arrival/First Bell
10:10	Hygiene Break
10:15	First Recess
10:30	Hygiene Break
11:45	Hygiene Break
11:50	Lunch
12:10	Hygiene Break
12:15	Lunch Recess
12:35	Hygiene Break
2:25	Hygiene Break
2:30	Dismissal

#### Group 2

8:45	Sanitizer Upon Arrival/First Bell
10:40	Hygiene Break
10:45	First Recess
11:00	Hygiene Break
12:25	Hygiene Break
12:30	Lunch
12:50	Hygiene Break
12:55	Lunch Recess
1:15	Hygiene Break
2:40	Hygiene Break
2:45	Dismissal



# Solana Vista

SCHOOL ADDENDUM  
FOR 2020-21 DURING  
RECONSTRUCTION

SEE SKYLINE AND SOLANA  
HIGHLANDS ADDENDA



Thank you  
for reading!

FIND MORE INFORMATION AT  
[WWW.SBSD.NET/REOPENING](http://WWW.SBSD.NET/REOPENING)



solana beach school  
district